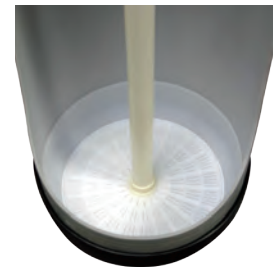
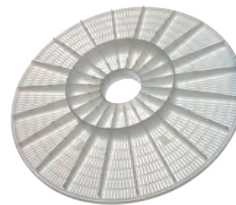


SpringTech™ SERIES



Vortech®



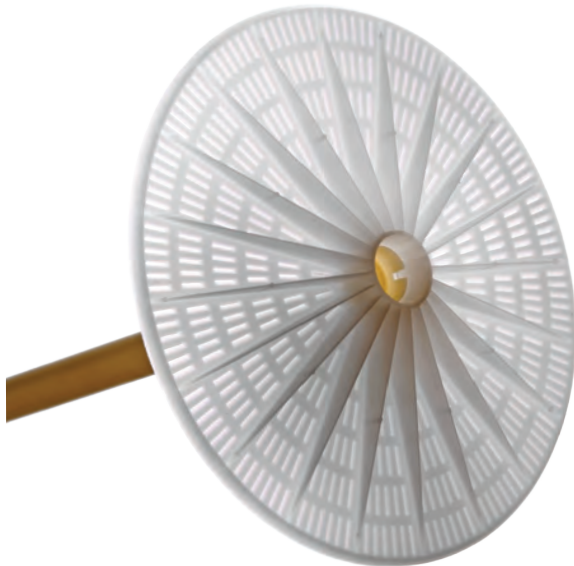
FEATURES

- Flexibility in picking sizes and components
- Vortech® bottom distribution system for a cleaner and more efficient system with less backwash
- Additional Mid-Vortech® option as a mid plate distributor eliminates the need of a second media tank
- No leakage (special injection process and mechanical welding of the glass-filled threaded inlet to the dome eliminate leaking)
- Unique 3-piece-design allows access to inside of tank during construction
- Superior impact resistance, consistent and strong quality
- Superior elasticity of co-polymer polypropylene used allows for controlled “breathing” without stressing the material
- CE, NSF, ACS, approved
- Comprehensive testing

Global Water Solutions SpringTech™ series represents an exclusive range of composite tanks featuring the unique and revolutionary Vortech® technology. The patented Vortech® is the world's newest, innovative and most efficient bottom distribution system. Cleaning is greatly improved, freeboard is reduced, and it works with all softening and filtrating medias. The SpringTech™ series with the unique Vortech® technology provides a cleaner and more efficient system. Advanced computerized manufacturing processes and finest materials used make the SpringTech™ series composite vessels for water treatment systems stronger and superior to the competitor's vessels.

VORTECH® -The Revolutionary New Distribution Technology

FEATURES & BENEFITS



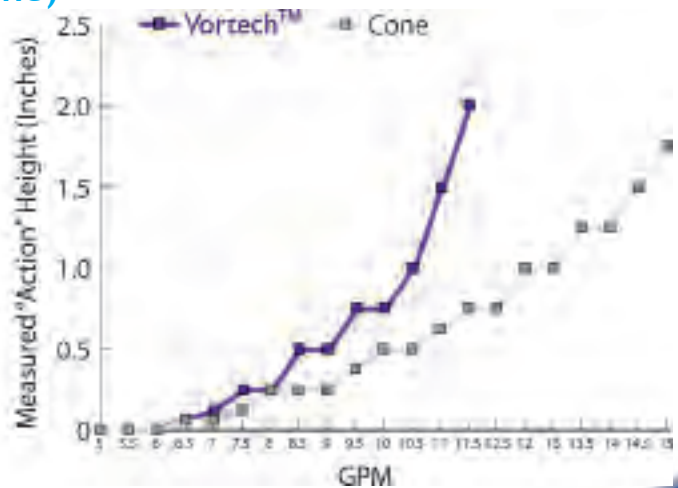
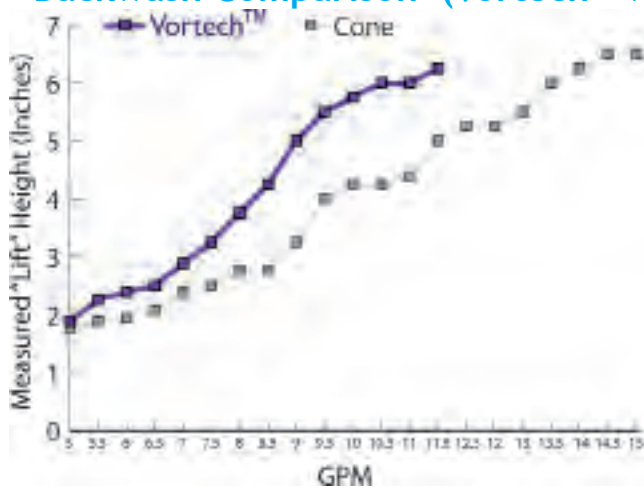
- Up to 30% less backwash flow rate is required, conserving water for the consumer
- High flow design maximizes today's high efficiency valve technology
- Permanent attachment of dip tube to distributor, so when servicing a valve, distributor stays in place, no more re-bedding
- Elimination of gravel, saves net costs and unit weight for shipping
- Improved system pressure drop characteristics
- Self-cleaning nozzle design eliminates potential clogging and build-up
- Increase in softening capacity, due to improved flow through media
- No channeling of media, providing a cleaner more efficient system
- Environmentally friendly, reduction in required backwash times due to improved bed lift and mixing at lower flow rates
- Most efficient softening regeneration, reducing salt consumption

Third Party Validation*

	Capacity Test @ 4.5 lbs of salt**	Gallons to drain**	Pressures / Δ p	Backwash time***	Pressure drop***
Cone & gravel	3472 grains	53.7	13.4 gpm @ 15psig Δ p	14 minutes	25 psi
Vortech®	4186 grains	31	@15psig Δ p, Flow rate 17.8 gpm	8 minutes	10 psi
Improvement	Increase of 21%	Decrease of 42%	Increase of 33% in flow rate	Saving up to 150 gal water/ cycle	Decrease of 60%

*Detailed test results available upon request **ST1040 ***ST1665

Backwash Comparison (Vortech™ vs. Cone)



Carbon 13" Diameter, Temperature 42°F, Quantity of Media 2.5 ft³, Weight of Underbedding - Cone 45 lbs

SPECIFICATIONS

SpringTech™ Series Models

Model #'s Old Part Number	Weight per Tank		Pieces per Box	Shipping Volume per Box		Shipping Weight per Box		Dimensions			
	kgs	lbs		m ³	ft ³	kgs	lbs	A		B	
								cm	inches	cm	inches
ST724	2.7	6	24	1.26	44.67	97.1	214	17.8	7	61	24
ST735	3.2	7	24	1.17	41.47	108	238	17.8	7	88.9	35
ST744	3.6	8	24	1.26	44.67	118.8	262	17.8	7	111.8	44
ST818	1.8	4	28	1.17	41.47	82.6	182	20.3	8	45.7	18
ST824	2.2	4.8	32	1.17	41.47	100.7	222	20.3	8	61	24
ST830	2.4	5.3	18	1.26	44.67	74.6	165	20.3	8	76.2	30
ST835	2.7	6	18	1.17	41.47	80.7	178	20.3	8	88.9	35
ST840	3.1	6.8	18	1.26	44.67	86.9	192	20.3	8	101.6	40
ST844	3.3	7.3	18	1.26	44.67	90.9	201	20.3	8	111.8	44
ST918	2.4	5.2	28	1.17	41.47	97.8	216	22.9	9	45.7	18
ST935	4.2	9.3	18	1.17	41.47	107.7	237	22.9	9	88.9	35
ST940	5.4	12	14	1.26	44.67	108	238	22.9	9	101.6	40
ST942	5.4	12	16	1.48	52.14	118.8	262	22.9	9	106.7	42
ST948	6.4	14	16	1.48	52.14	133.4	294	22.9	9	121.9	48
ST1018**	4.3	9.5	48	1.73	61.05	238.6	526	25.4	10	45.7	18
ST1022**	4.5	10	32	1.17	41.47	176.9	390	25.4	10	55.9	22
ST1024**	5	11	32	1.48	52.14	191.4	422	25.4	10	61	24
ST1030**	5.7	12.5	12	1.17	41.47	99.8	220	25.4	10	76.2	30
ST1035**	6.4	14	12	1.17	41.47	108	238	25.4	10	88.9	35
ST1040**	6.8	15	12	1.26	44.67	113.4	250	25.4	10	101.6	40
ST1044**	7.1	15.8	12	1.26	44.67	117.5	259	25.4	10	111.8	44
ST1047**	7.4	16.3	14	1.48	52.14	134.9	298	25.4	10	119.4	47
ST1054**	7.9	17.5	16	1.73	61.05	158.8	350	25.4	10	137.2	54
ST1060**	8.5	18.8	1	0.12	4.41	40.3	89	25.4	10	152.4	60
ST1065**	9.1	20	1	0.13	4.76	40.8	90	25.4	10	165.1	65
ST1229	5.4	12	9	1.17	41.47	80.7	178	30.5	12	73.7	29
ST1236	6.1	13.5	9	1.26	44.67	86.9	192	30.5	12	91.4	36
ST1242	6.8	15	9	1.26	44.67	93	205	30.5	12	106.7	42
ST1244	7.1	15.8	9	1.26	44.67	96	212	30.5	12	111.8	44
ST1248	7.6	16.8	9	1.48	52.14	100.1	221	30.5	12	121.9	48
ST1252	8.6	19	9	1.73	61.05	109.3	241	30.5	12	132.1	52
ST1330**	7.3	16	12	1.17	41.47	118.8	262	33	13	76.2	30
ST1335**	7.7	17	12	1.17	41.47	124.3	274	33	13	88.9	35
ST1348**	8.6	19	9	1.48	52.14	109.3	241	33	13	121.9	48
ST1354**	9.5	21	9	1.73	61.05	117.5	259	33	13	137.2	54
ST1360**	10.4	23	1	0.2	7.02	42.2	93	33	13	152.4	60
ST1365**	11.3	25	1	0.21	7.48	43.1	95	33	13	165.1	65
ST1430*	7.7	17	10	1.17	41.47	108.9	240	35.6	14	76.2	30
ST1454*	13.2	29	8	1.73	61.05	137	302	35.6	14	137.2	54
ST1465*	15.9	35	1	0.25	8.71	47.6	105	35.6	14	165.1	65
ST1472*	17.7	39	1	0.25	8.71	49.4	109	35.6	14	182.9	72
ST1623*	8.2	18	1	0.12	4.18	39.9	88	40.6	16	58.4	23
ST1636*	12.7	28	1	0.18	6.35	44.5	98	40.6	16	91.4	36
ST1653*	18.6	41	1	0.26	9.19	50.3	111	40.6	16	134.6	53
ST1665*	22.7	50	1	0.35	12.36	54.4	120	40.6	16	165.1	65

Maximum operating pressure: 10 bar / 150 psi

Maximum operating temperature: 50°C / 122°F

* Minor dimensional variation may occur

Top Opening Connection: 2,5" NPSM

Dome hole option available for 10", 12" and 13" diameter vessels

*Also available in 4" UN connection

**Mid-Vortech® mid plate distributor available for 10" and 13" diameter vessels

All tanks come with Vortech™ bottom distributor plate

VESSEL MATERIAL SPECIFICATIONS

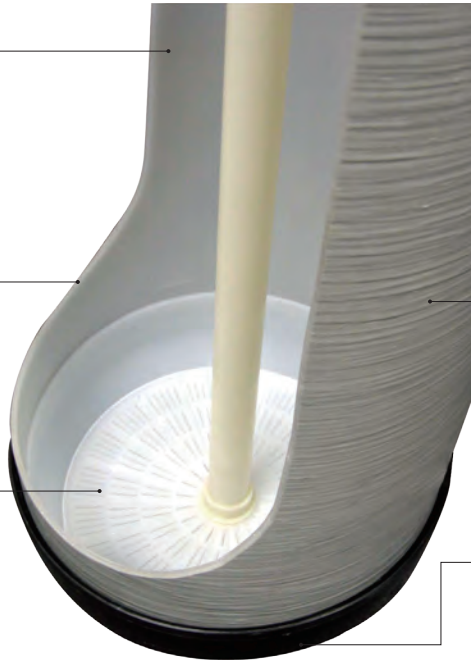
Co-Polymer Polypropylene Inner Shell Material

Superior elasticity allows for controlled “breathing” without stressing the material

Superior impact resistance and superior performance in hot and cold environments

Extruded side wall produces consistent wall thickness over the entire length of the part eliminating potential thin spots or stress points

Vortech® bottom distribution system for a cleaner and more efficient system



High temperature/high pressure injection molding allows the glass-filled threaded inlet to be mechanically welded to the dome eliminating potential leak paths

Premium Fiberglass/Epoxy Winding (computer controlled)

Epoxy laminate is oven cured for superior environmental performance

Injection Molded Base

Injection molded from impact/temperature resistant polypropylene

ADDITIONAL FEATURES AVAILABLE UPON REQUEST

Mid-Vortech® Option available for 10” and 13” Vessels



Exclusive internal mid plate distributor Mid-Vortech® eliminates the need for a second media tank and valve by creating physical separation of medias within a single tank.

Reduces plumbing and packaging requirements and saves water, salt and the environment!

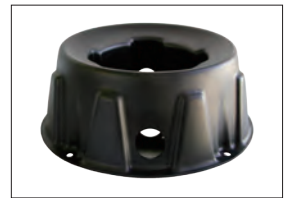
DI Exchange Vessels and Accessories



DI Exchange Heads



Extended Bases



ACS
Approved

